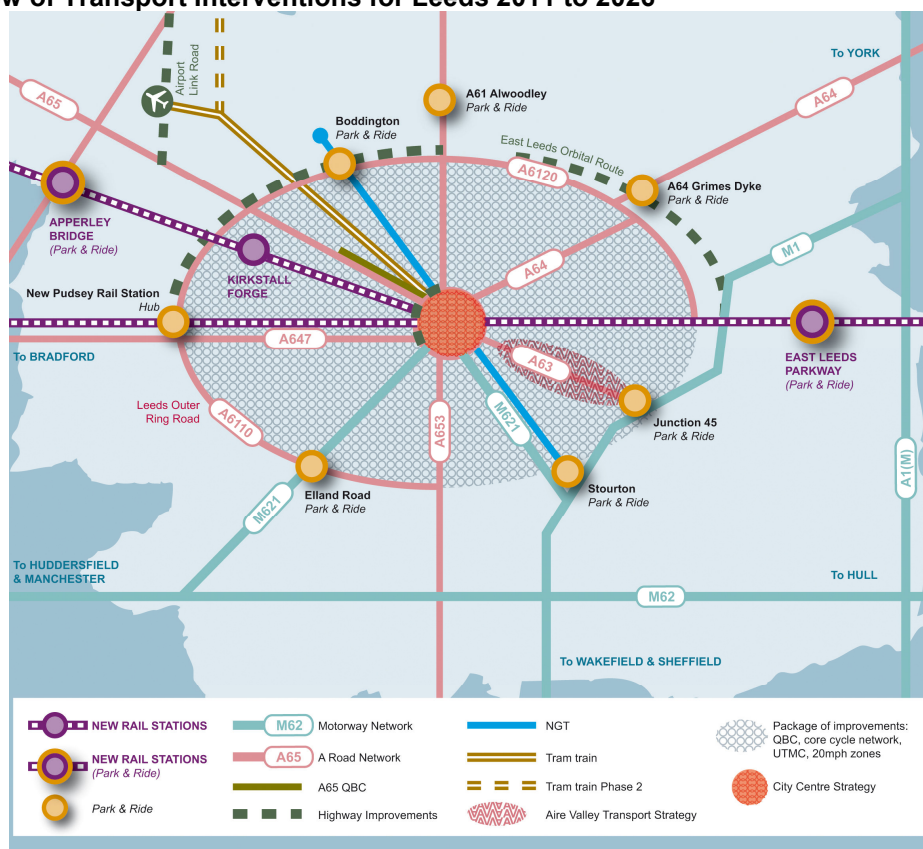


Leeds Local Implementation Plan (LIP) and Transport Strategy - Summary

The Leeds LIP and Transport Strategy document have been prepared to complement the overall plan for West Yorkshire by setting out in greater detail the planned investments in transport at the local level over the next three years. Recognising the need to also give greater clarity to transport planning for Leeds, the document elaborates on the detail of future transport strategy, aspirations and programme of schemes for Leeds and shows how these support the objectives of the overarching LTP document.

Our shared vision, reflecting that of the LTP, is that by 2026 investment by LCC, Metro and partners will have transformed transport provision within Leeds, enabling the growing population to travel more easily to more destinations by public transport, walking and cycling; helping to limit the growth in congestion and cutting carbon emissions and air pollution. The roads will be safer, with fewer people being injured, and higher levels of walking and cycling will have resulted in a healthier population. A range of transport interventions planned over the next 15 years will help us secure this goal. An overview of these proposals is included in Figure 1. A new strategy for the city centre will contribute to a significant improvement to the urban realm and quality of life which is less traffic dominated (Figure 2).

Figure 1 Overview of Transport Interventions for Leeds 2011 to 2026



Leeds City Council is responsible for developing and agreeing the 3-year implementation plan proposals for our District with Metro. A scheme identification and prioritisation process for the first three year Implementation Plan has been managed at the West Yorkshire level by Metro, in conjunction with district council partners, on the basis of the three Core Objectives for LTP3:-

- To improve connectivity to support economic activity and growth in West Yorkshire and the LCR.
- To make substantial progress towards a low carbon, sustainable transport system for West Yorkshire, while recognising transport's contribution to national carbon reduction plans.
- To enhance the quality of life of people living in, working in and visiting West Yorkshire.

A summary of the schemes and initiatives within the Leeds Local Implementation Plan 2011-14 are described in Table 1. These elements of the implementation plan have been broadly categorised according to the four strategic transport themes, as identified in the West Yorkshire MyJourney LTP Strategy 2011-26.

Figure 2 Overview of Transport Interventions for Leeds City Centre 2011-26

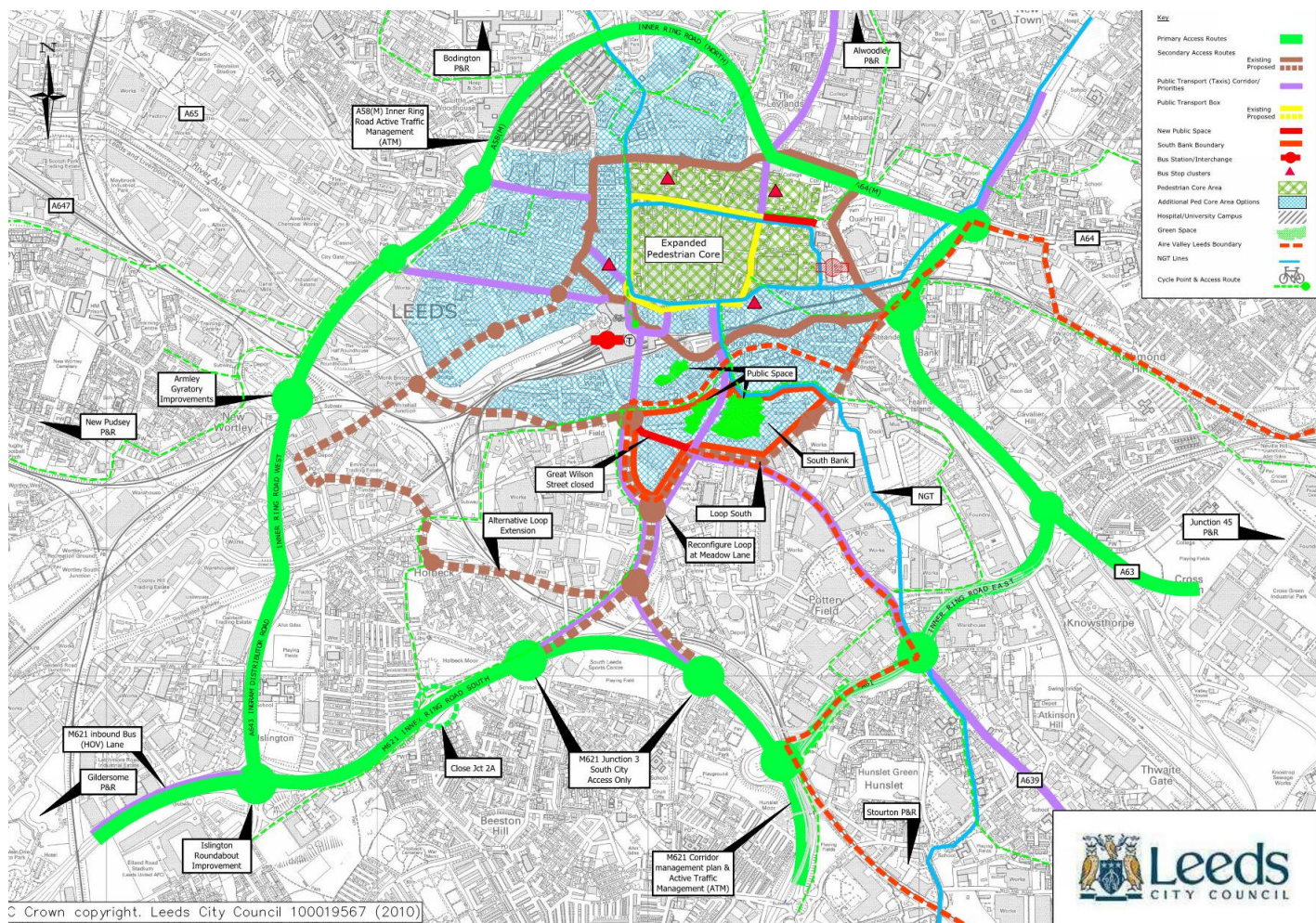


Table 1: Leeds Implementation Plan Programme 2011-2014 – Summary

Theme	Programme of major schemes
ASSETS	
A well-maintained and managed transport network forms the basis of good local transport provision	<ul style="list-style-type: none"> Leeds Inner Ring Road major maintenance and strengthening works Maximising use of the highways asset through use of technology and enforcement Annual programme of kerbing, footway and carriageway maintenance Joint procurement across West Yorkshire on highway maintenance. Package of investment in Urban Traffic Control (UTC).
CHOICES	
Increasing the number of sustainable travel options available to the public through travel choice.	<ul style="list-style-type: none"> Development of Leeds Core Cycle Network, routes 7 (Scholes to City Centre), 10 (Bramley to CC), 12 (Garforth to CC) and 13 (Morley to CC) Cycle access to City Square (Cyclepoint access Phase 3) City centre car parking variable message signs
CONNECTIVITY	
Connecting communities with work places and amenities.	<ul style="list-style-type: none"> Park and ride schemes Bus priority measures: Dewsbury Rd QBC, Canal Street, Churwell Hill, Roundhay Road Integrated Transport scheme, Harrogate Road and Gelderd Road.
ENHANCEMENTS	
Focus on better use of new technology to improve the efficiency and safety of travel and to encourage economic growth.	<ul style="list-style-type: none"> NGT and other major scheme development City Centre transport strategy Highways improvements at A6120 Horsforth/Rodley junctions, Armley Gyratory, and M621 J2 Traffic light priority for buses
OTHER	
Other integrated transport schemes	<ul style="list-style-type: none"> Local road safety schemes 20mph zones and limits Pedestrian crossings and facilities